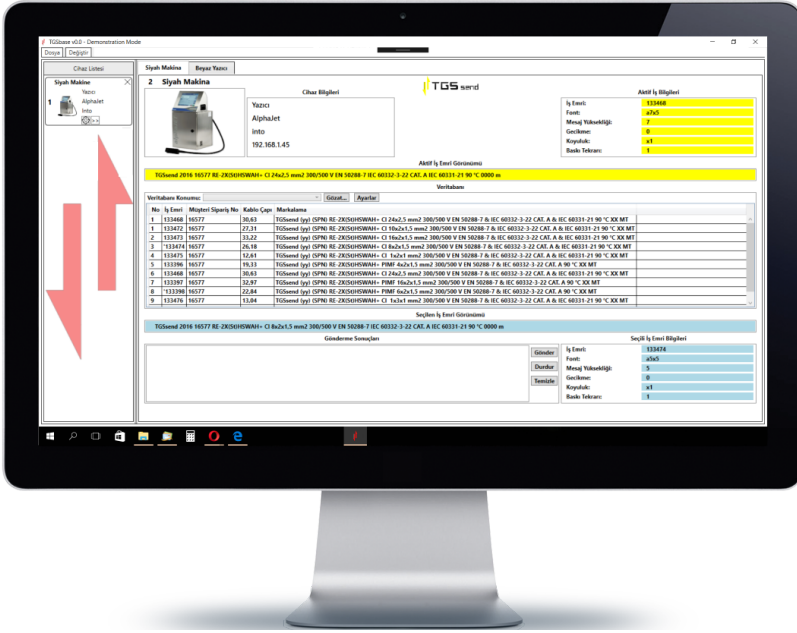


Remote layout sending software
for industrial printers.

TGS
base
send



TGSsend software is a solution to send all the requested message layouts to your printers at once.



TGSsend can connect barcode readers to pick requested layout. Using a barcode reader is optional, you can send your layouts manually also.



TGSsend has an handheld widget. With this intelligent solution, there is not need a remote computer. All of the tasks of TGSsend will be executed by handheld processor.

With this intelligent software and its versions, you will get those benefits below;

- **Standart** version is providing manual solution to send layouts to the printers. You can send all the layout at once or one by one. After that, the requested message layout can easily be selected by your field staff.
- **Remote** version is working with barcode readers. Thanks to this solution you do not need to select requested layouts on your computer. Barcode reader on field can pick the layout and send it to the remote computer that runs TGSsend. Consequently, the remote computer can send the layout and select it automatically.
- **Handheld** version does not need a remote computer. TGSsend widget can be run on Windows CE handheld terminals. The field staff can select layout and printer with the handheld terminal. They can send the layout via one click.

All of TGSsend version can support variety of data sources such as; SQL, OPC, Access, Excel, Text etc.

TGS Elektronik Mühendislik Yazılım Sanayi ve Ticaret Limited Şirketi

Tel: +90 (212) 691 61 33

www.tgselektronik.com

İstanbul Üniversitesi Teknoloji Geliştirme Bölgesi Entertech Binası Kat:3 Ofis: 307 Avclar
- İstanbul



Active Job

Job Number:	133468
Font:	9x7
Message Height:	9
Delay:	0
Weight:	x1
Repeat Count:	1

Active Job section contains all the information of selected message layout on selected printer.

Active Job Overview

TGSsend 2016 166577 RE-2X(ST)HSWAH

Active jobs can be seen on the software as it seen on printer screen.

Database Window

#	Job #	Order #	Rad.	Message data
1	133468	16577	30,63	TGSsend (yy) (SPN) RE-2X(St)HSWAH+ CI 24x2.5 mm2 300/500 V EN50288-7 & IEC 60332-3-22 CAT.A &
2	133472	16577	27,31	TGSsend (yy) (SPN) RE-2X(St)HSWAH+ CI 10x2x1.5 mm2 300/500 V EN50288-7 & IEC 60332-3-22 CAT.A &
3	133473	16577	33,22	TGSsend (yy) (SPN) RE-2X(St)HSWAH+ CI 16x2x1.5 mm2 300/500 V EN50288-7 & IEC 60332-3-22 CAT.A &
4	133474	16577	26,18	TGSsend (yy) (SPN) RE-2X(St)HSWAH+ CI 8x2x1.5 mm2 300/500 V EN50288-7 & IEC 60332-3-22 CAT.A &
5	133475	16577	12,61	TGSsend (yy) (SPN) RE-2X(St)HSWAH+ CI 1x2x1 mm2 300/500 V EN50288-7 IEC 60332-3-22 CAT.A &

Send Results

133468 -----> Succeed
133472 -----> Succeed
133473 -----> Succeed
133474 -----> Succeed
133475 -----> Succeed

Send Results screen provides information about sending action. If there is an error while sending a layout can be seen on it.

Database Settings

Anahtarlar:

(SPN)	Müşteri Sipari	*	derece	3
(yy)	YYYY			
XX MT	0000 m			

Database settings screen provide keyword settings to pick those fields:

- Logo (on the printer memory)
- YYYY and YY (year information four or two digits)
- 0000m (Four digits meter)

to insert them on the layout.

Automatic message orientation option is an intelligent option to arrange message position on the cable. The shorter messages can print several times on a meter.

Radius limits can be adjusted to decide font heights.

Weight values can be assigned specific radius intervals.